



SOLUTION CATALOGUE

Explore our Extensive range of
Solutions & Products

F2TH Communications Pvt Ltd is a leading provider of Optical Networking, Device Management, Wi-Fi Networking, and Access Network Products and Services in India .

Based in Bangalore, our certified engineers ensure seamless deployment, supported by a pre-sales team for customized solutions and a project management team for smooth execution . With extensive experience in Optical Networking, Campus Networking, Security, Surveillance, and hospitality solutions, we deliver excellence in every project .

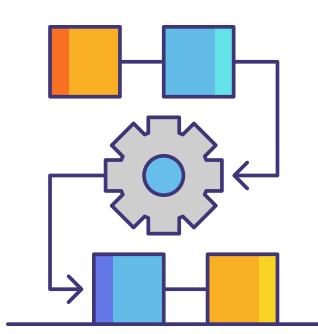
Our commitment to customer satisfaction drives our partnerships with top OEMs, providing access to advanced technologies . We design and implement robust IT and telecom infrastructures tailored to meet evolving technological demands and diverse business needs .

**Integrated Communications
Solutions Provider**



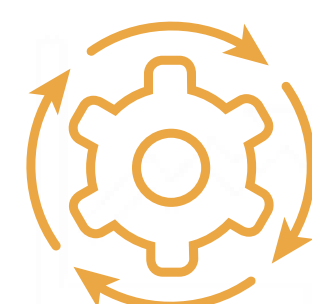
**20 Plus years of Industry Experience
and Expertise**

**Tie up with leading OEMs and Service
Providers in the Industry**

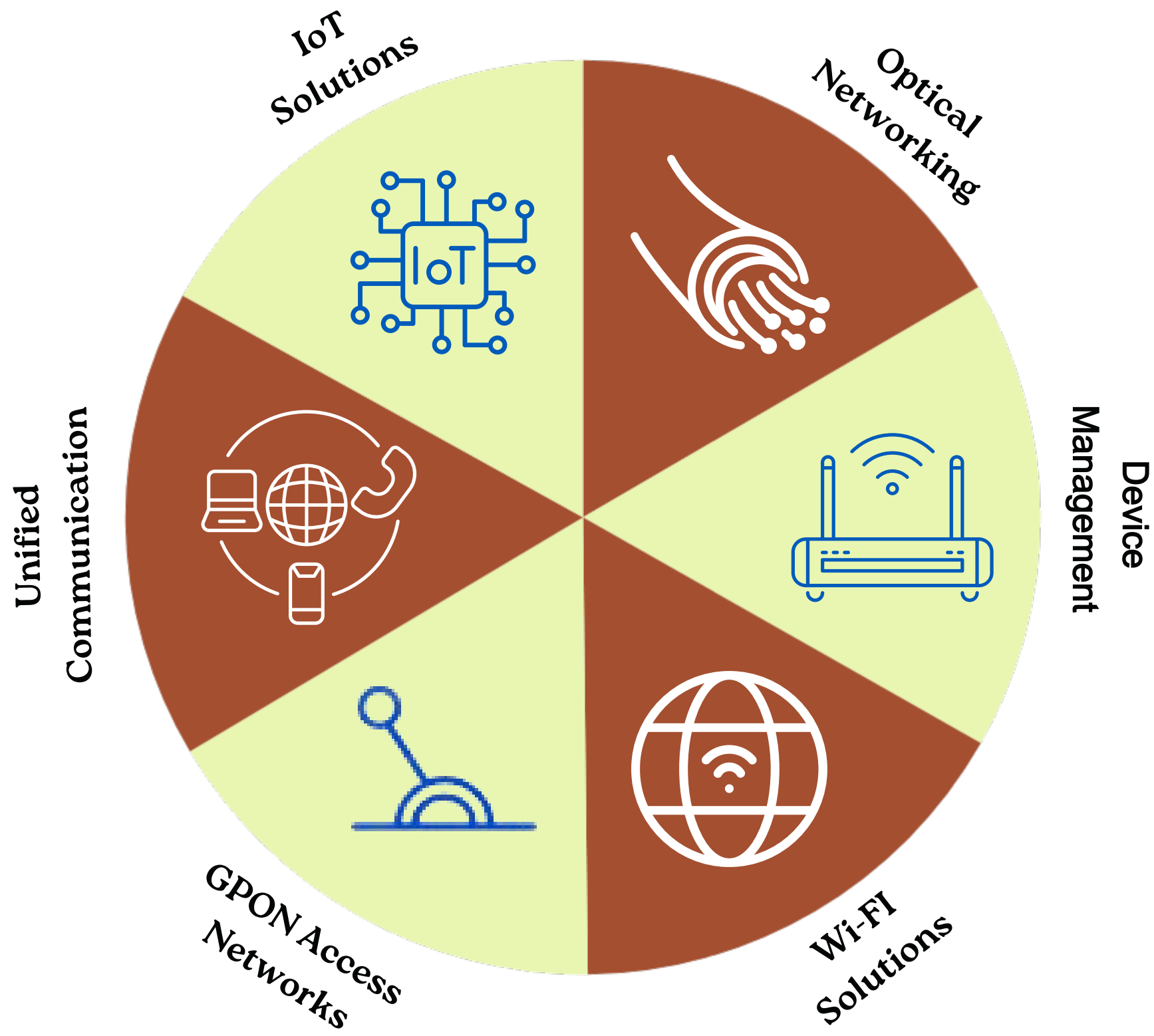


**Provide complete end to end
technology and service solution**

**Offers complete project life cycle from
concept to supply, Install, maintain
and operate**



WHY F2TH?



24/7 Support from F2TH Team



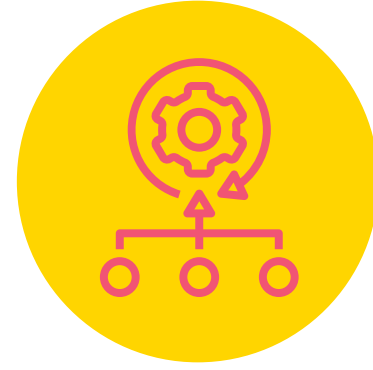
MICTE Approved Products



Made in India Products



3rd Party ONT Support



Common EMS for GPON and EPON



Fully functional Web GUI



BSNL Approved Products



RMA Support in all major Cities in South India



Competitive pricing and exceptional quality



3 Years Warranty

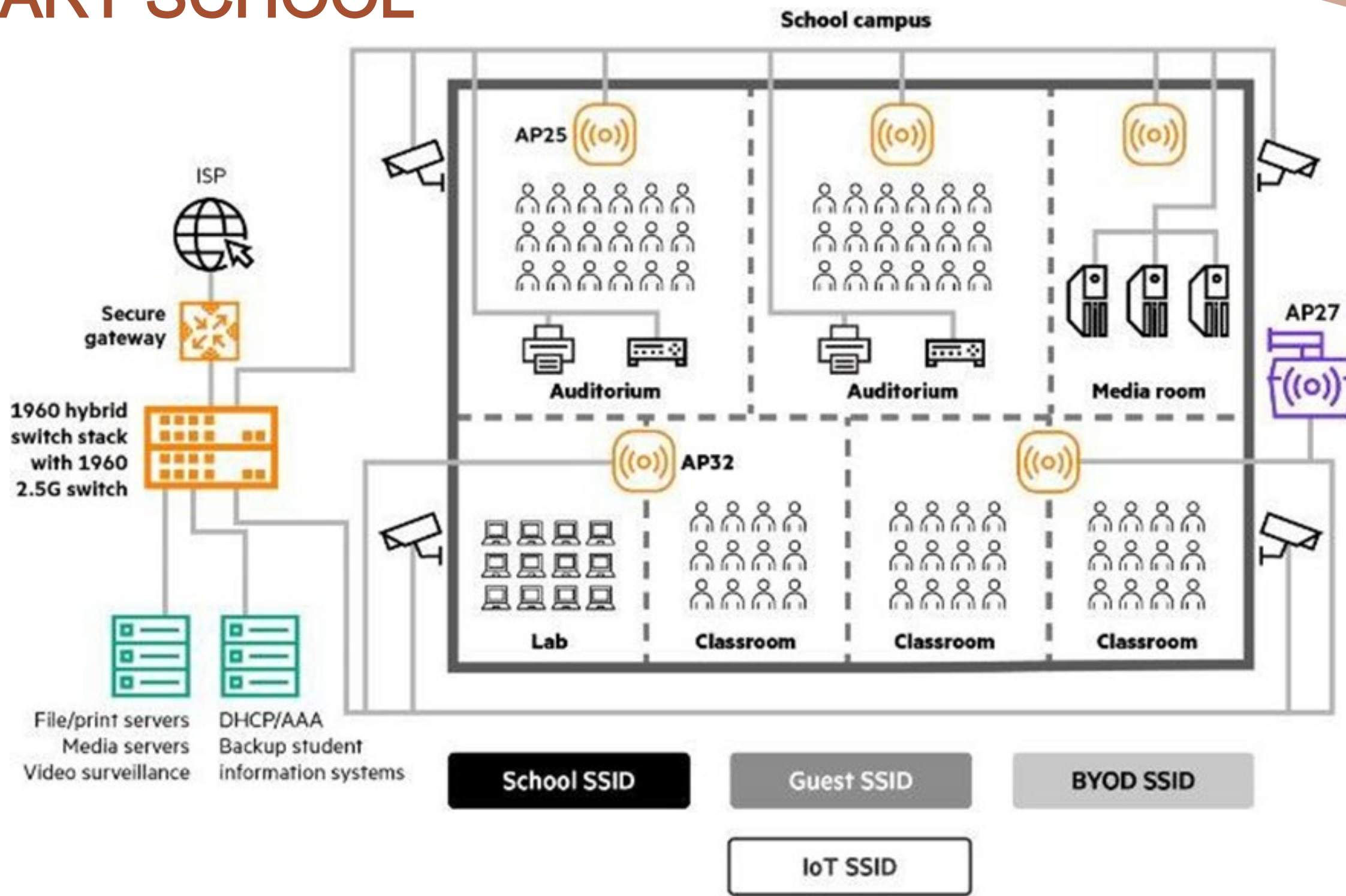


Mobile app for OLT & ONT remote management

STRATEGIC ALLIANCES

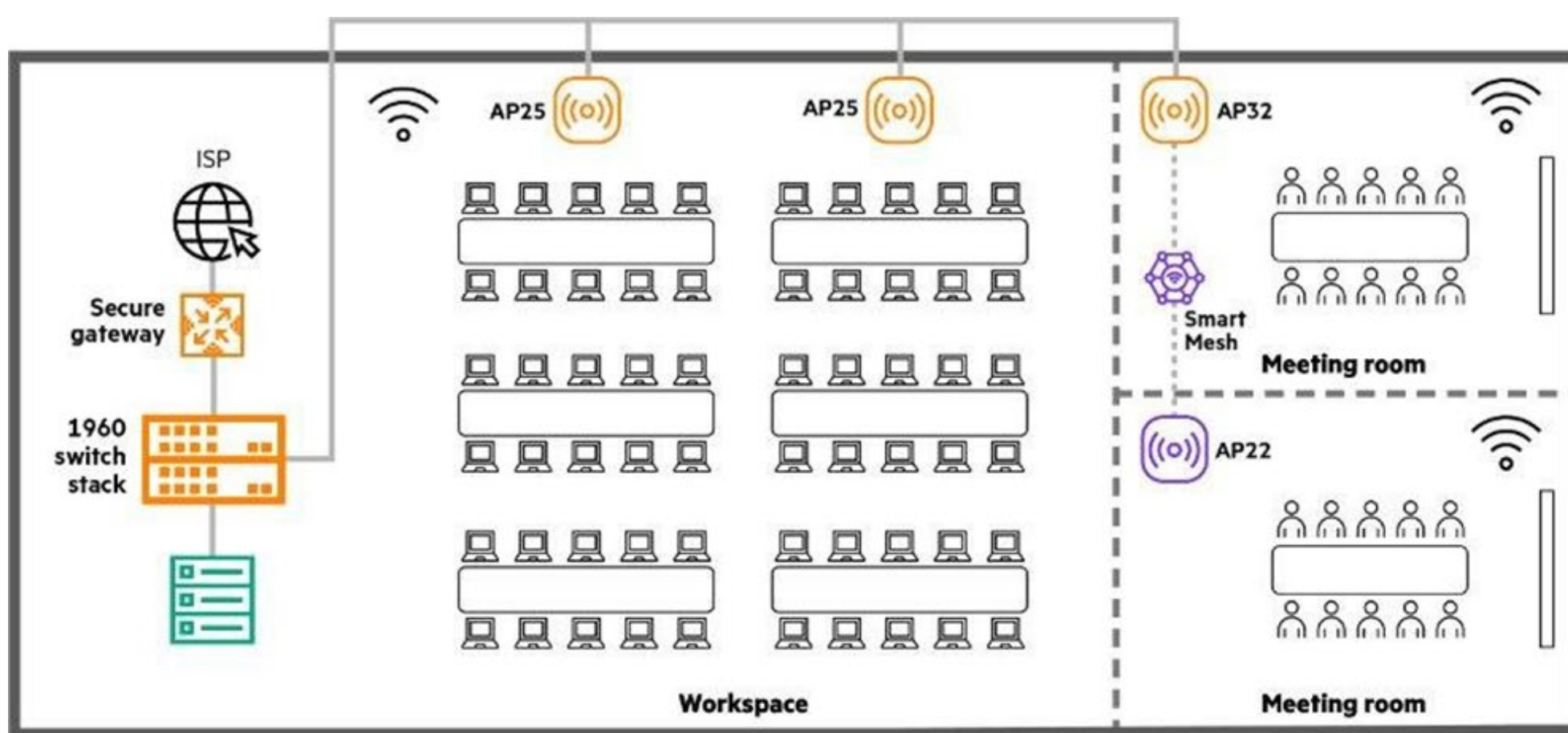


SMART SCHOOL



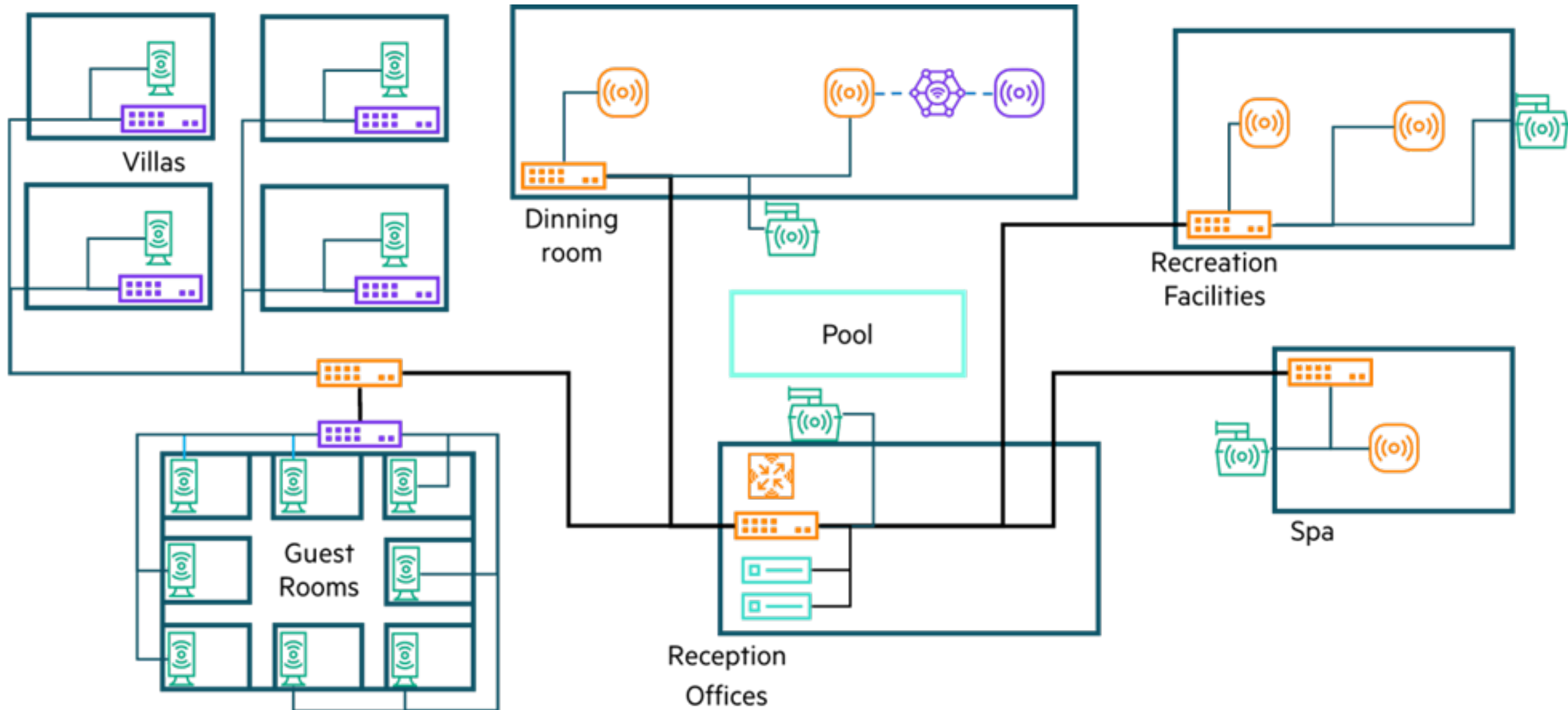
- Enables strong connectivity between students and educators
- Allows separate and secure networks for staff, students, and guests
- Uses application detection for safer internet browsing
- Controls bandwidth to prevent high-usage activities like video streaming
- HPE Instant On 1960 switches support stacking for campus-wide Ethernet distribution
- Smart Mesh technology extends network access to hard-to-reach areas

PROFESSIONAL OFFICE



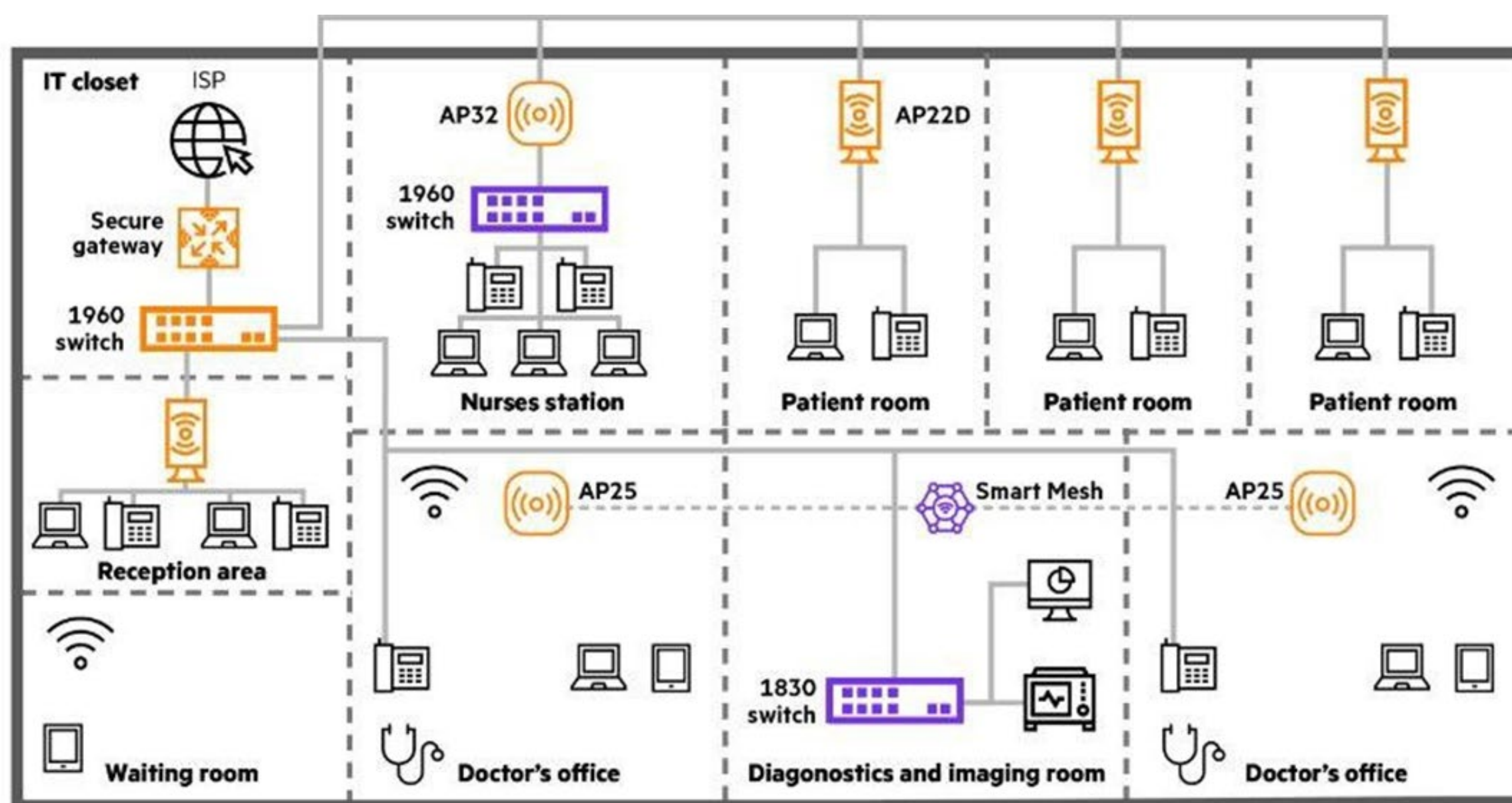
- increasing cloud and edge workloads require faster, high-performance infrastructure
- HPE Instant On 1960 aggregation stack ensures redundancy and resiliency for cloud and on-prem servers
- 176 Gbps aggregate throughput with PoE access switches supports low-latency connectivity for users and devices
- Instant On AP22, AP25, and AP32 provide enterprise-grade wireless access for seamless mobility

HOSPITALITY



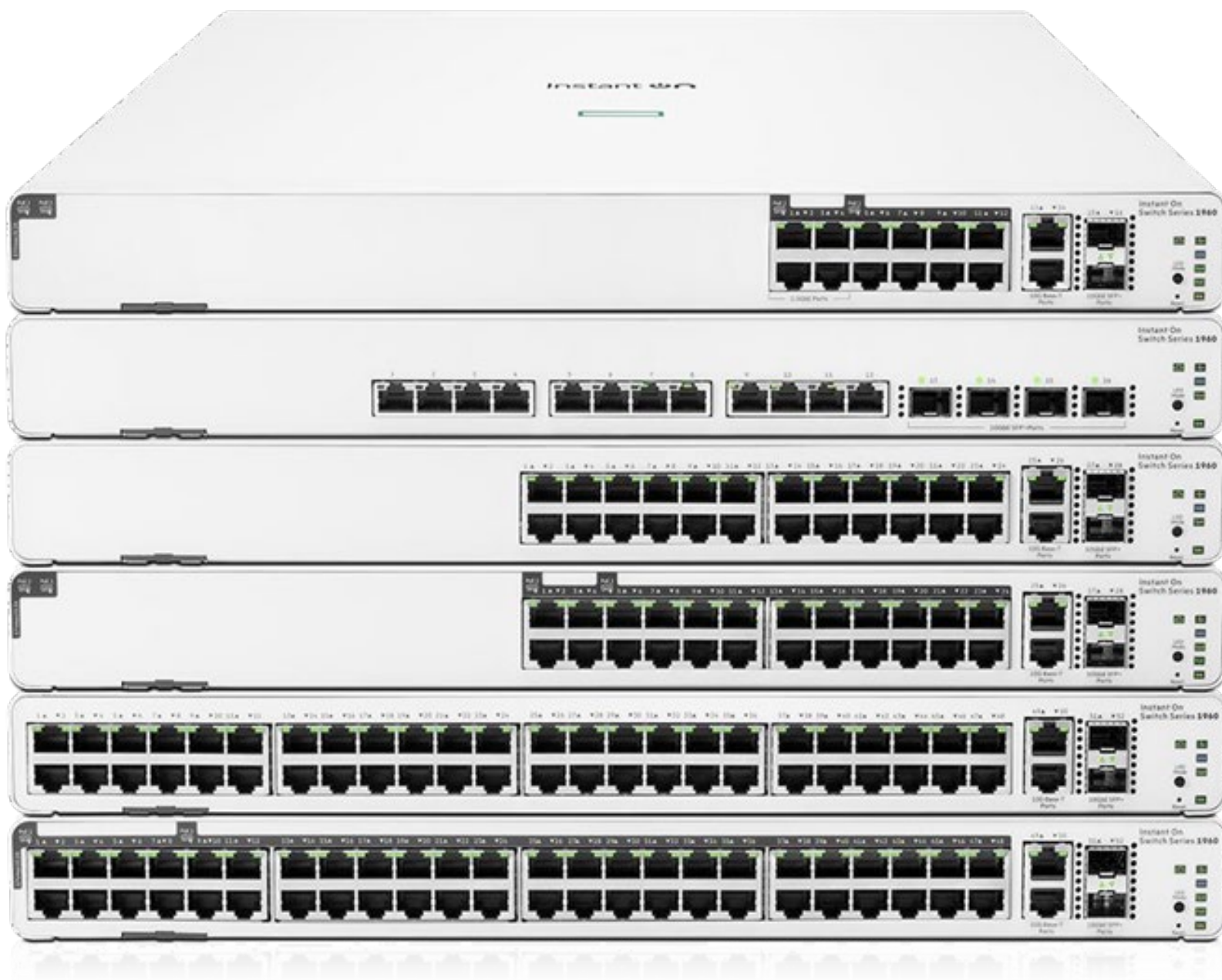
- Easily separate guest and employee networks using the HPE Networking Instant On app
- Offer simple guest access or a custom captive portal via third-party partners
- Limit bandwidth for guests while keeping full performance for internal users
- Provide guests easy internet access without sharing or disrupting employee Wi-Fi credentials

HEALTHCARE



- Reliable 24/7 connectivity to support critical healthcare devices and operations
- Proactive network monitoring with alerts using the HPE Networking Instant On app
- Simple segmentation of guest and clinical networks without complex VLANs
- Smart Mesh APs and stacking switches deliver strong coverage and dependable performance

Smart Managed Stackable Switches



Desk-mounted Access Point



**HPE Networking
Instant On
Access Point AP22D
Desk/Wall
2x2:2 802.11ax**



Indoor Access Point



**HPE Networking
Instant On
Access Point AP25
4x4:4 802.11ax**



**HPE Networking
Instant On
Access Point AP32
2x2:2 802.11ax**



**HPE Networking
Instant On
Access Point AP22
2x2:2 802.11ax**



**HPE Networking
Instant On
Access Point AP21
2x2:2 802.11ax**



Outdoor Access Point



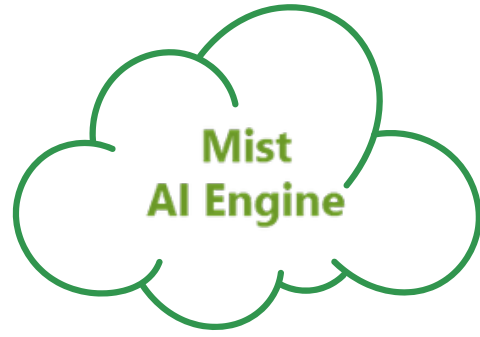
**HPE Networking
Instant On
Access Point AP27
IP67 Outdoor
2x2:2 802.11ax**



SDN, Management & Automation



Security Director
Cloud



AIDE
management
Automation



Paragon WAN
Automation



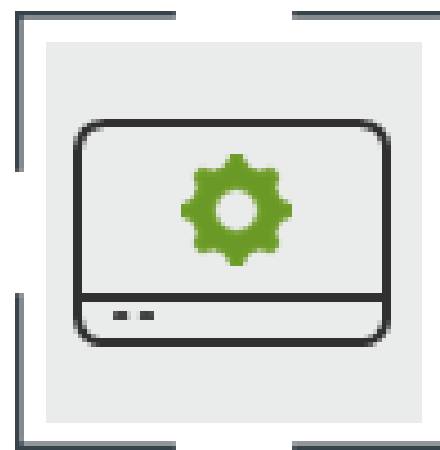
Data Center IT
Automation

Wireless - LAN

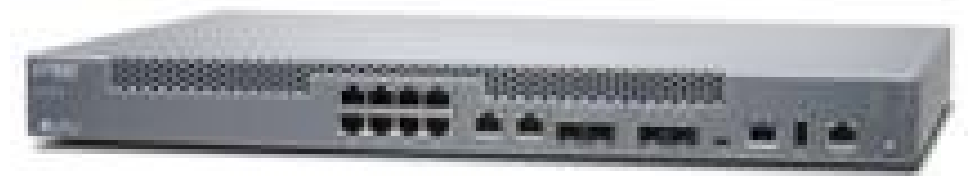


AI Driven WLAN

SD WAN



SDWAN SSR



SD-WAN/Cloud enabled
Branch

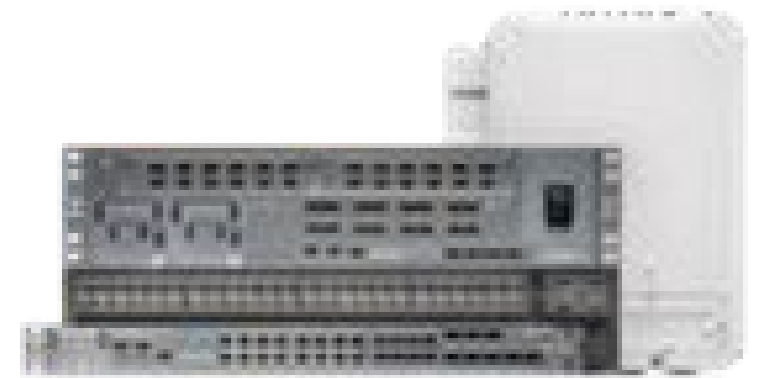
Routing



MX Edge Routers



PTX Packet Transport Routers

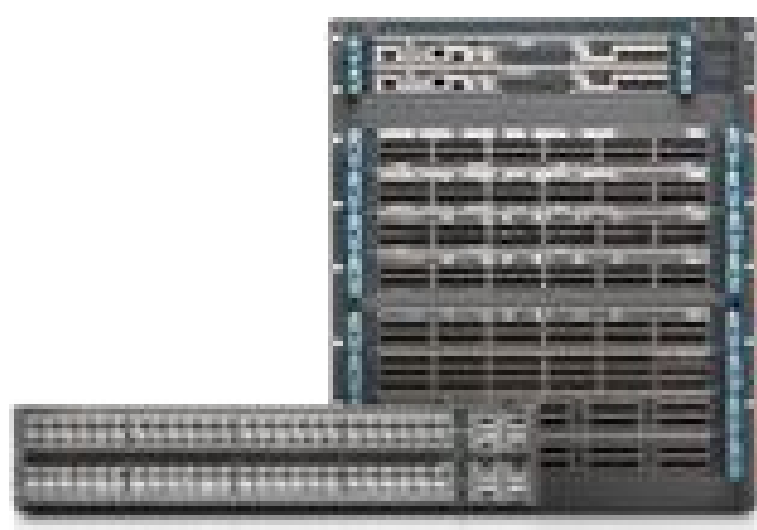


ACX Access Routers



SRX Service Gateways

Switching



QFX Data center switches



EX Campus switches Branch
& Access

Security



SRX Service Gateways



Voice Gateway Products



4
Port



8
Port



16
Port



24
Port



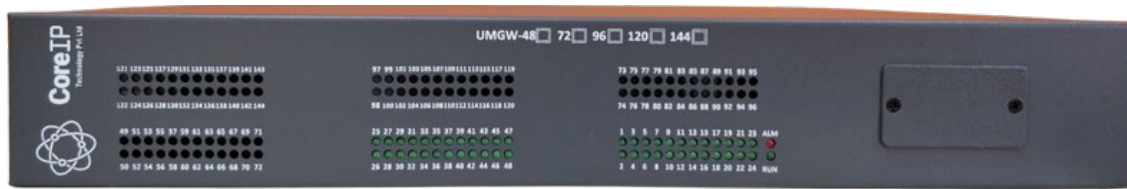
32
Port



48
Port



72 Port



120
Port



MEDIA TRUNK
GATEWAY 1P/2P

IP Phones



CoreIP Vaani101P



CoreIP Vaani102P



CoreIP Vaani102P



CoreIP Vaani102W



CoreIP Vaani23G



CoreIP Vaani46G



CoreIP Vaani2096G



CoreIP Vaani58G

Unified Communications



**IPPBX- All in One - Voice/Voice Mail/
Video Call/Audio Bridge/ Call Billing**

GPON OLTs



RH8004GL OLT
4 Port GPON OLT



RH8008GLOIT
8 Port GPON OLT



RH8016GLOIT
16 Port GPON OLT

EPON OLTs



RH8004EL
4 PORT EPON OLT



RH8008ES
8 PORT EPON OLT



RH8004EL
4 PORT EPON OLT
with Built-in Battery Charger

XPON ONTs



RH801G S
Rugged 1Data ONT



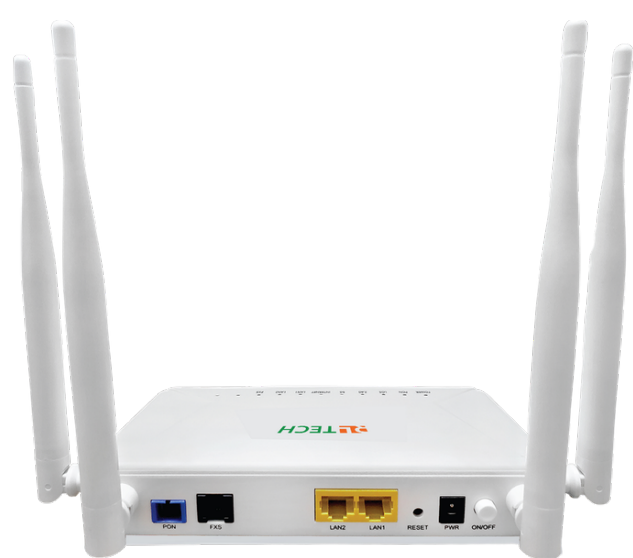
RH801G xPON ONT
1 Data



RH801G W xPON ONT
1 Data + IEEE 802.11n Wi-Fi



RH821GWV xPON ONT
2 Data + 1 Voice + 11n Wi-Fi



RH821G WV-DG xPON ONT
2 Data + 1 Voice + 11ac Wi-Fi



RH821G WV-DGB xPON ONT
2 Data + 1 Voice + 11ac Wi-Fi



RH802G W-DG xPON ONT
2 Data + 11ac Wi-Fi



RH841G WV-DGB XPON ONT
4 Data + 1 Voice + 11ac Wi-Fi



RH841G WV-AX3BH4
4 Data + 1 Voice + 11ax Wi-Fi



RH804G-GP
4 Data PoE+ ONT



RH841G WV-AX3BF



RH802G W-AX3
FTIR Slave ONT

GPON OLTs



DIGISOL 1 Port GPON OLT



DIGISOL 2 Port GPON OLT



DG-GO4304-2E2SFPP
4 Port GPON OLT



DG-GO4308-6E2SFPP
8 Port GPON OLT

EPON OLTs



DG-GO4204-8E
4 Port EPON OLT



DG-GO4208-12E4SFP
8 Port EPON OLT

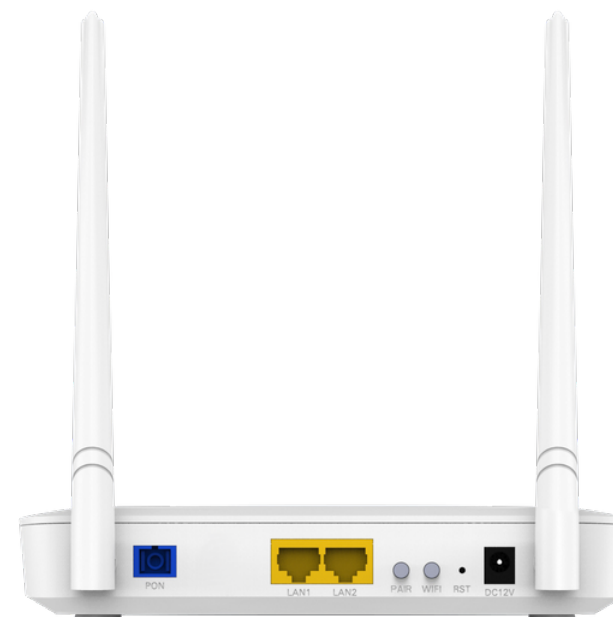
XPON ONTs



DG-GR6010
XPON 1 Data ONT



DG-GR6011
XPON 1 Data+1 Voice ONT



DG-GR1321
XPON 300 Mbps Wireless,
2 Data(1GE+1FE)+1 Voice
Single Band ONT



DG-GR6821AC
XPON 1200 Mbps Wireless,
2 Data(2GE)+1 Voice
Dual Band ONT



DG-GR321NV
XPON 300 Mbps Wireless,
2 Data(1GE+1FE)
Single Band ONT



DG-GR6821AC NV
XPON 1200 Mbps Wireless,
2 Data(2GE)
Dual Band ONT

SFP TRANSCEIVERS



DG-GA1133P4
HIGH PERFORMANCE
EPON SFP
TRANSCEIVERS



DG-GA1132GC+++
HIGH PERFORMANCE
GPON SFP
TRANSCEIVERS



- Yeastar P-Series: Unified communications for calls, video, messaging, and contact center
- All-in-one solution: PBX, live chat, omnichannel messaging, video meetings, 3rd -party integrations
- Flexible deployment: Cloud, on -premise, or hybrid
- Broad interoperability: Auto -provisions 400+ phones and SIP trunks from 150+ ITSPs
- Simple administration: Panel -based management, granular permissions, advanced reporting
- Secure & reliable: Hardened architecture with multi -layer security and reduced downtime
- Scalable & cost -effective: Lowers TCO, reduces training, and grows with business needs

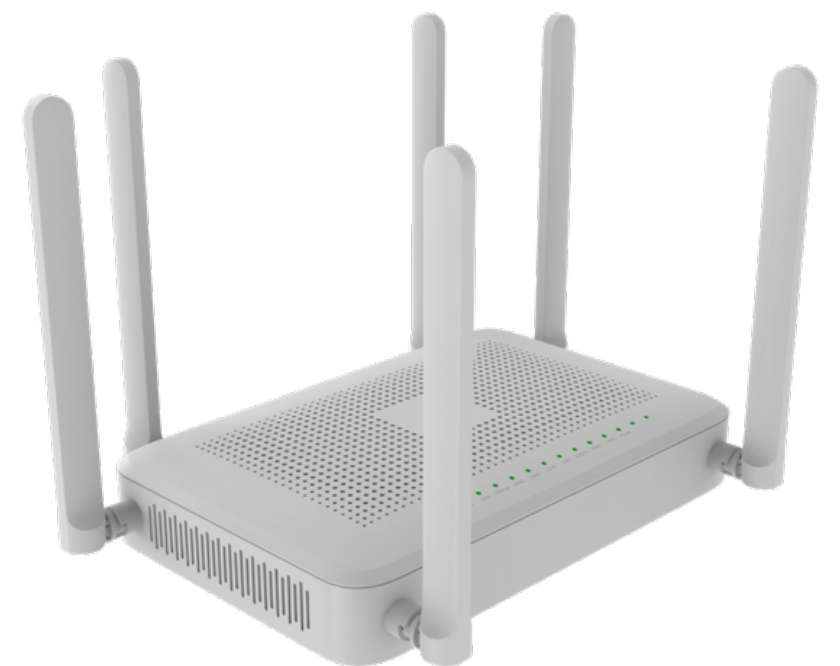




- Scalable Campus FTTH solutions for residential and enterprise networks
- Built on Nokia GPON & XGS -PON platforms
- Uses Nokia 7360 ISAM FX OLT and high -performance ONTs
- Delivers high -speed, reliable fiber connectivity
- Supports smart digital and future -ready services
- Supports smart digital services and connected campus applications
- Designed for future -ready, upgradeable network architecture



- Carrier -grade Wi-Fi 6 ONT for FTTH deployments
- Combines optical access + dual -band high -speed Wi-Fi in one device
- OFDMA & MU-MIMO for higher throughput and lower latency
- Handles multiple users and dense home environments efficiently
- TR-069 /OMCI remote management & provisioning for easy ISP operations
- Advanced QoS, WPA3 security, and guest network support
- Ideal for high -capacity broadband, gaming, 4K/8K streaming, and smart home services





Honeywell Impact MMS – Security, Safety & Smart Building Solutions

Honeywell Impact MMS is a comprehensive suite of multi-modal safety, security, surveillance, and smart building products designed to protect people, premises, and assets while enhancing operational efficiency and resilience. It brings intelligent, tech-enabled solutions that are easy to install, scalable, and well-suited for commercial, institutional, and mid-segment environments.

Key Offering Areas

Security & Surveillance: High-resolution IP/AHD cameras and smart AI surveillance with analytics for real-time monitoring and threat alerting.

Access Control: Scalable access solutions with modern identification technologies and centralized manageability.

Fire Safety Systems: End-to-end fire detection and alarm systems with conventional, semi-addressable panels and detectors for rapid hazard response.

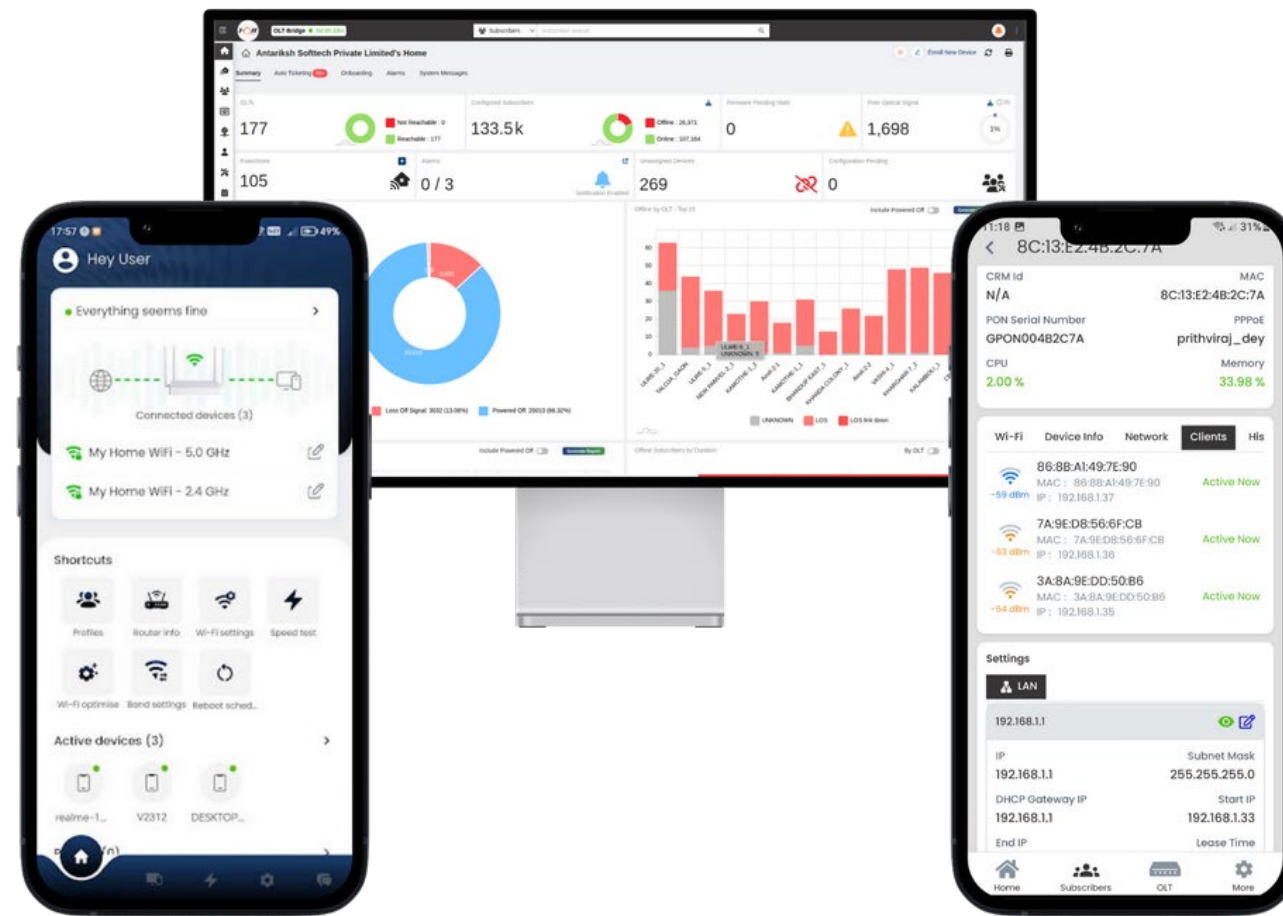
Energy & Environmental Sensors: Smart motion and energy management sensors for optimizing power use and comfort.

Impact MMS products balance reliability, ease of deployment, and value, making them suitable from small to large facilities that require integrated safety and security management.





Fii- Unified Network Management



Network Operations
Centre Teams



Field
Engineers
& Technicians



Subscribers
& End Users

Unified Network Management & Support

—OLT → ONT → Subscriber (one portal)

Fii- A Vendor-agnostic OSS + field-support stack that unifies telemetry, topology, auto-ticketing and guided field ops to cut MTTR and improve subscriber experience.

Core modules

- FiiViz —subscriber telemetry & diagnostics
- Fii EMS —OLT health & SNMP monitoring
- FiiberMap —fiber topology & splitter outage mapping
- FiiDesk —event correlation & smart ticketing
- FiiDiag + FiiConnect —field dispatch & subscriber notifications

Key capabilities

- Full network visibility (OLT/ONT, optical, CPU/memory)
- Subscriber tools (speed test, ping/traceroute, remote reboot, Wi-Fi insights)
- Auto-ticketing with intelligent filtering & context enrichment
- Map-driven fault localization + guided field workflows
- Role-based dashboards & mobile app for ISPs, LCOs, franchisees

Business benefits

- Lower MTTR & fewer field visits
- No blind spots —scale confidently
- Fewer false alerts via AI/Ops correlation
- Automated SLA workflows —better NPS

Unified Platforms for the Internet of Things (IoT) & Telecommunications



Friendly App Builder

Easily create your own IoT application to suit your vertical. Multiple existing use cases for water & gas utility metering, logistics & tracking, and flexibility to fit most IoT device management needs.



Friendly One - IoT™ Device Management

Device management and data collection to suit multiple verticals, including utility metering, agriculture, logistics, transportation, and more. Supporting all standard protocols, including LwM2M, MQTT, CoAP, TR-369/USP, and more.



Friendly Unified Device Management

Friendly TR-069/TR-369 is a standards-based platform designed for centralized management, control, monitoring, and delivery. Streamlining the support or broadband services with customized solutions for residential and business use cases.



Wi - Fi Optimization

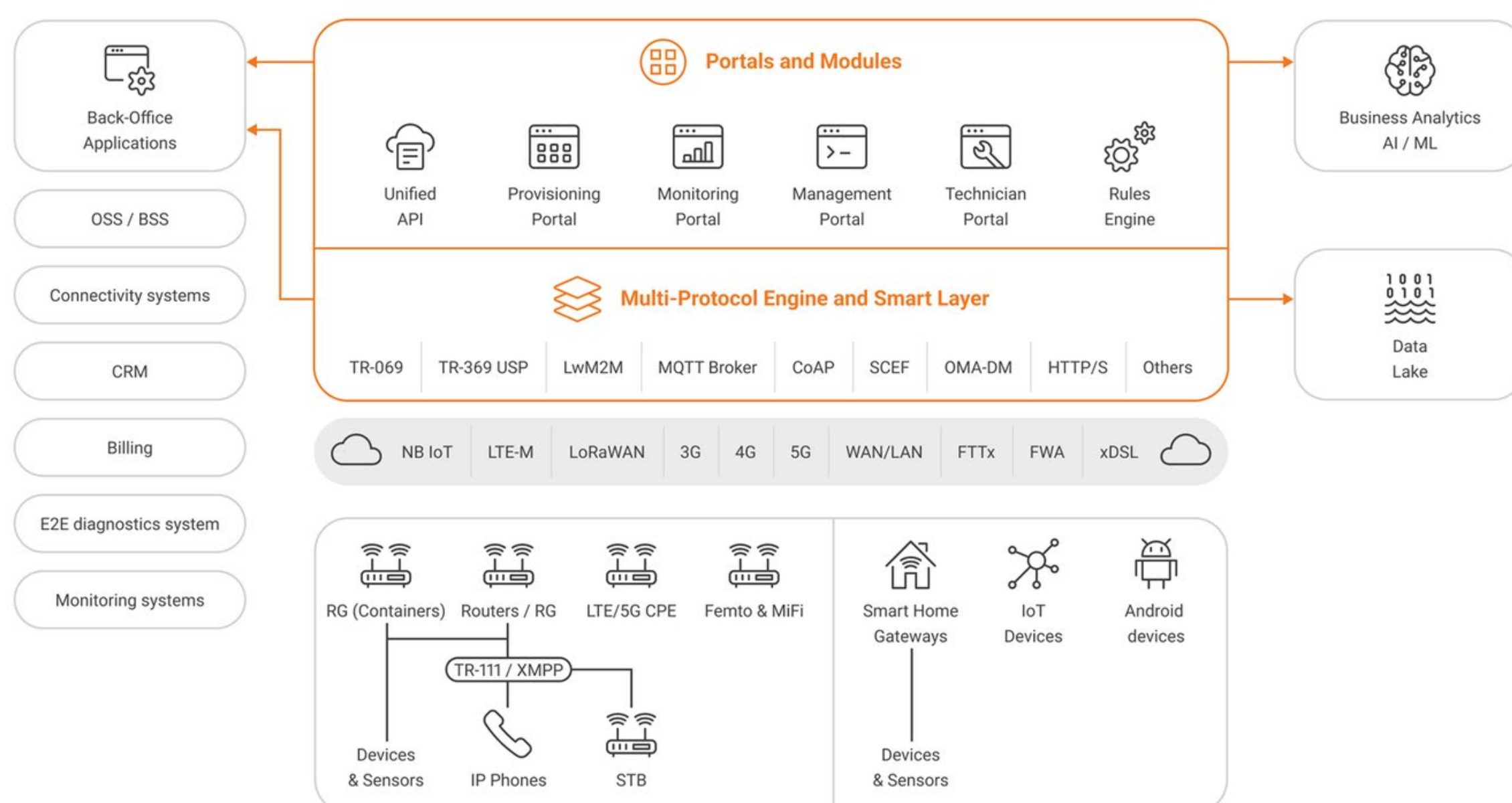
Enabling carriers/service providers with the capability to provide strong and reliable wireless connectivity for all connected devices within the subscriber's environment. The toolset includes the Friendly Connect App for subscribers and Wi-Fi mesh management.



QoE Analytics & Monitoring

Advanced quality of experience monitoring and analytics for Data, VoIP, and IPTV services from the subscriber's device

Device Management Architecture

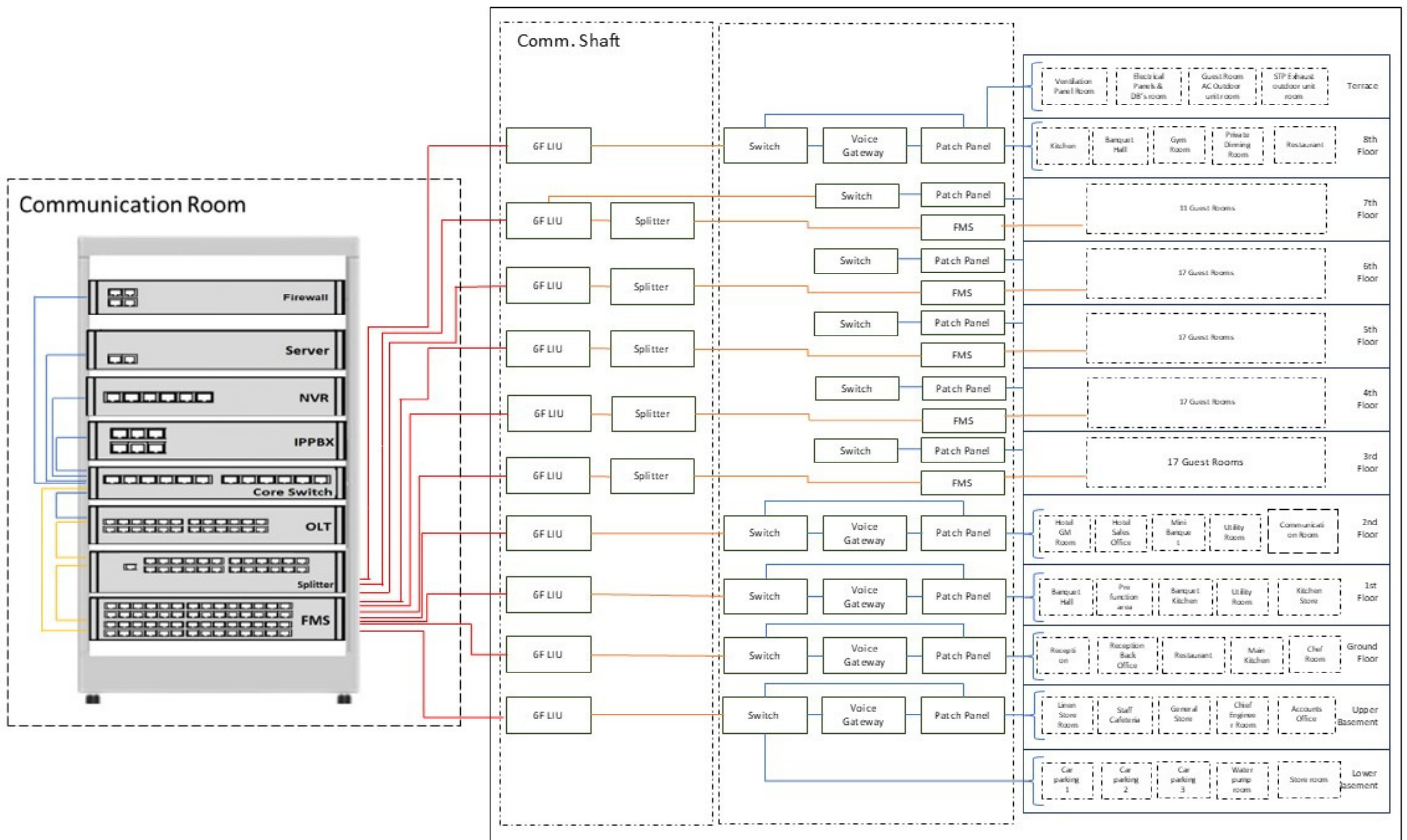


The Fern Residency, Sheshadripuram, Bangalore



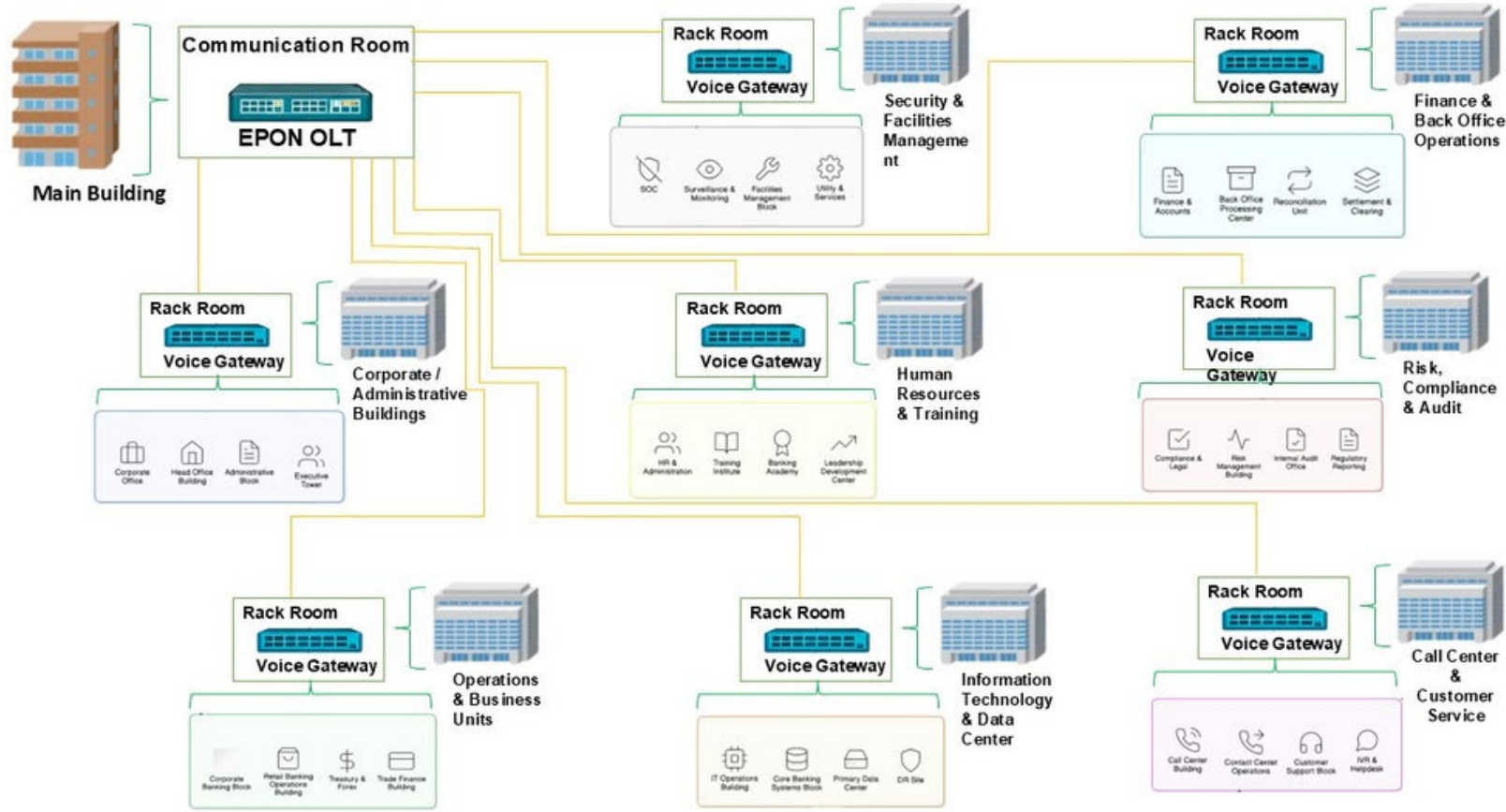
The Digital backbone of the modern Business Hotel

- High speed Hotel WLAN
- Future ready Optical LAN
- Secure Firewall and gateways
- Smart Surveillance
- Immersive IPTV
- Unified Voice Communications
- Access Control



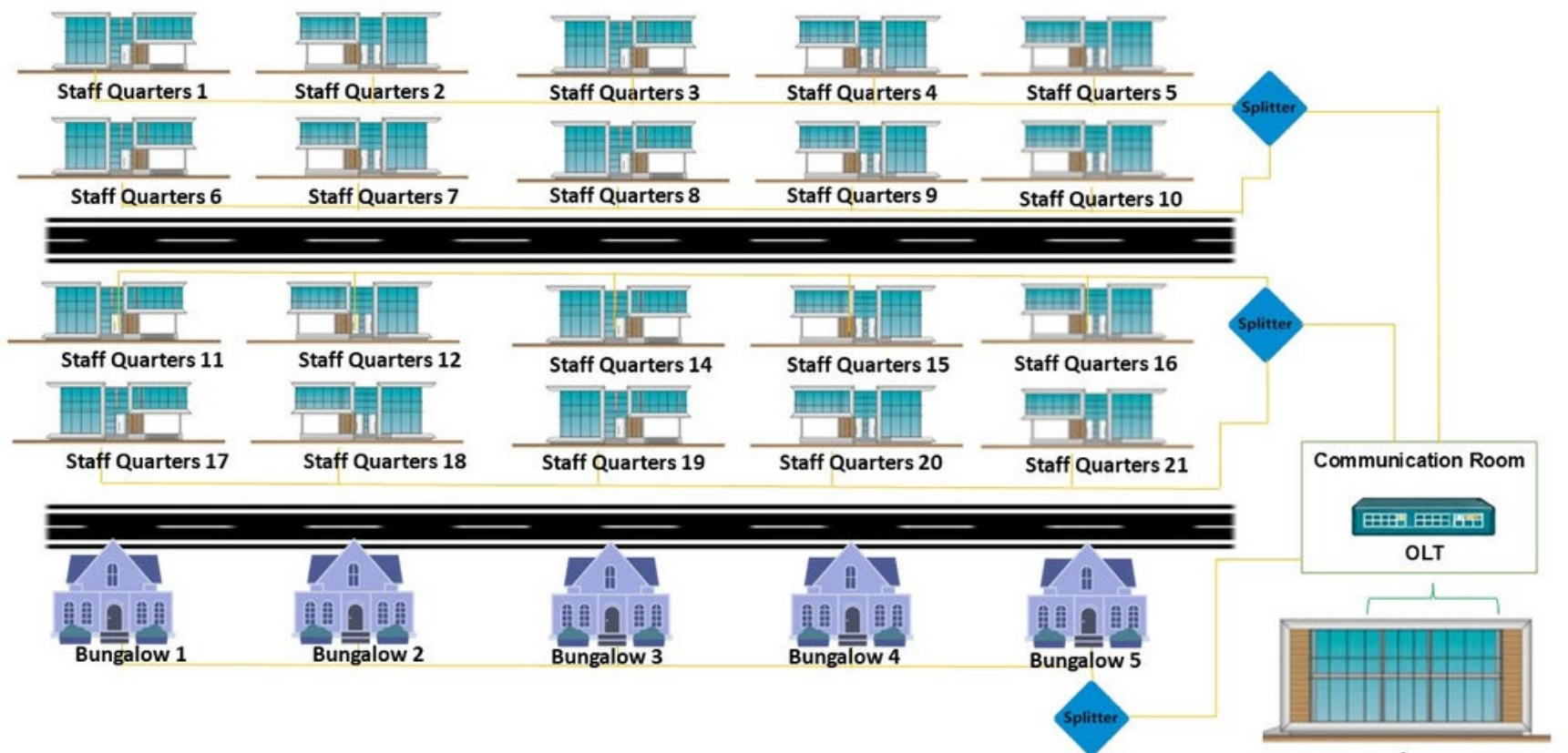
The Invisible Infrastructure: Powering Seamless Experiences, everywhere

SBI-LHO, Bangalore



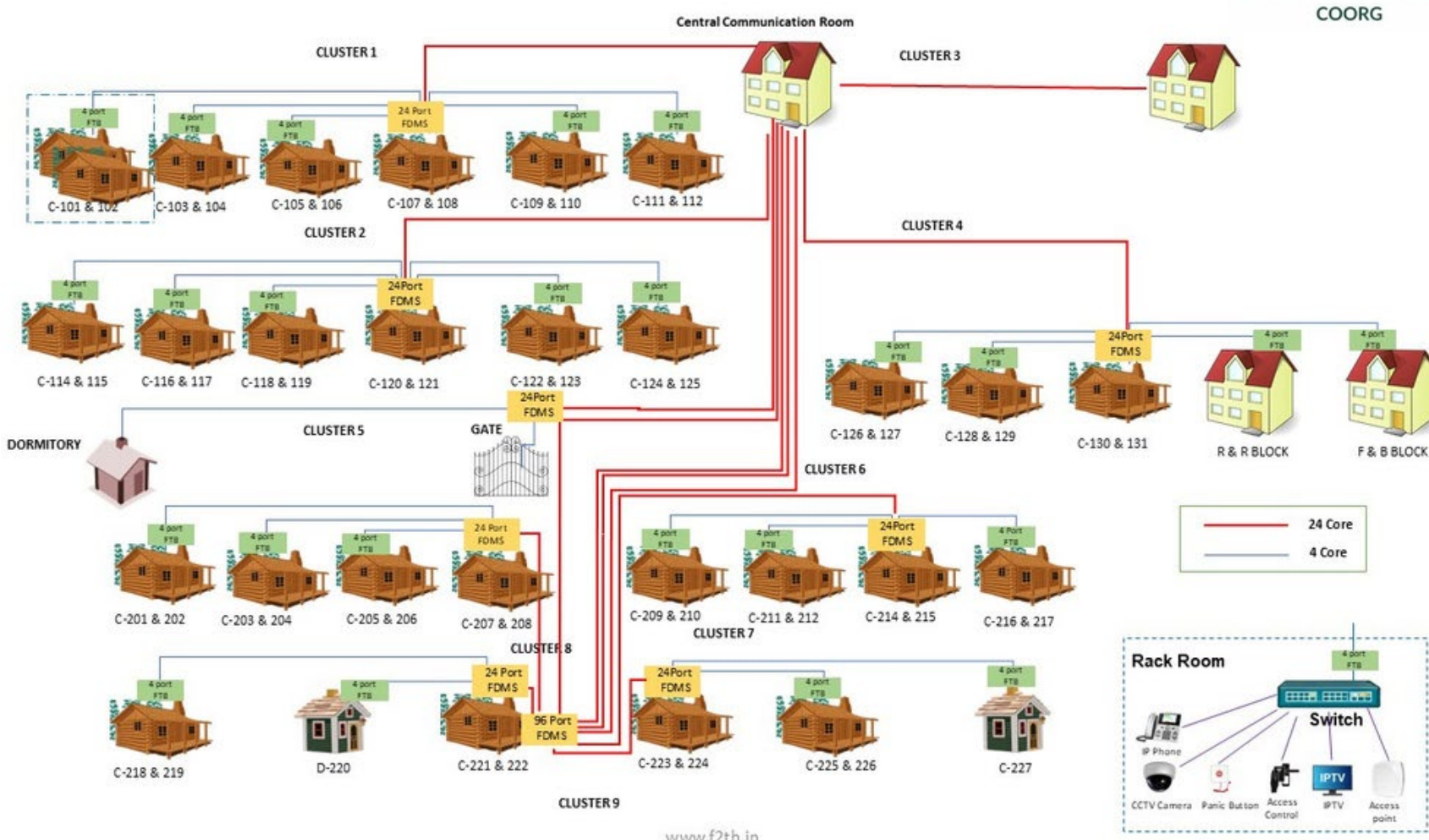
Secure Voice Networks for Critical Communications at SBI LHO

NITK - Surathkal



High-Speed GPON based campus Network for Seamless Connectivity at NITK Staff Quarters

The Tamara Coorg

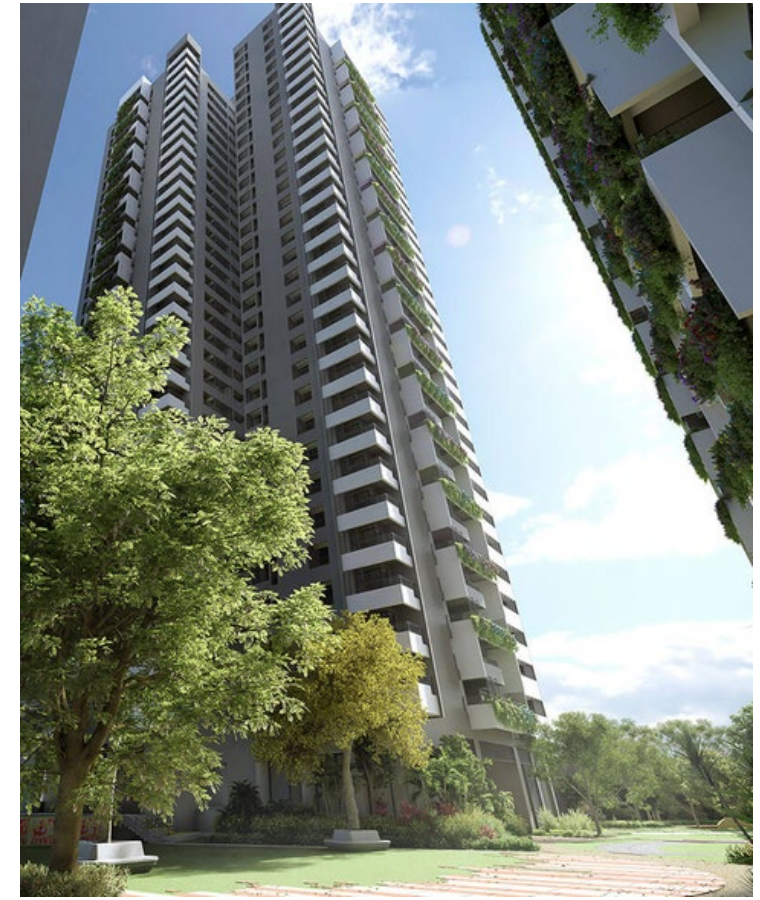


Seamless Campus wide Unified Communications with Yeastar IP PBX

Real Estate Projects

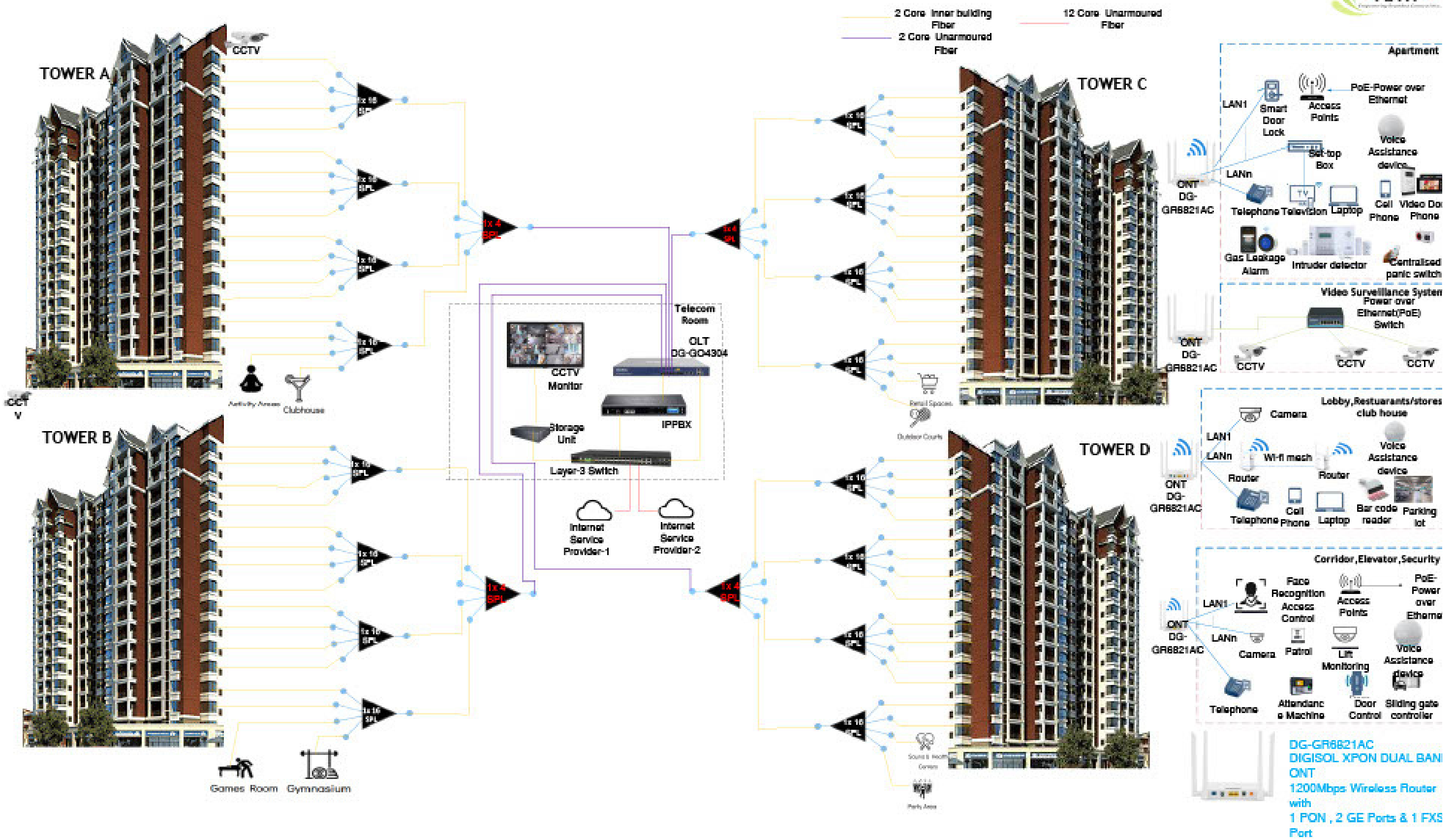


My Home Sayuk



Alekya The Rise

Comprehensive GPON Network Solution for Highrise Building



My Home Nishida



My Home Avali

FiiAnalytics

Unified Network Management & Support Platform

- Single Pane of Glass
- 100% Network Coverage
(We onboard existing devices already in field)
- Proactive Issue Detection
- Reduced Support Costs
- Faster Resolution
- Seamless Integration

FiiWiz

Comprehensive web dashboard for NOC teams and support staff

- Real-time network status monitoring
- OLT health tracking (CPU, Memory, Temp)
- Proactive alarm management
- ONT telemetry for bridge mode devices
- Performance dashboards by region
- Remote diagnostics (ping, speed tes

FiiiberMap

Comprehensive web dashboard for NOC teams and support staff

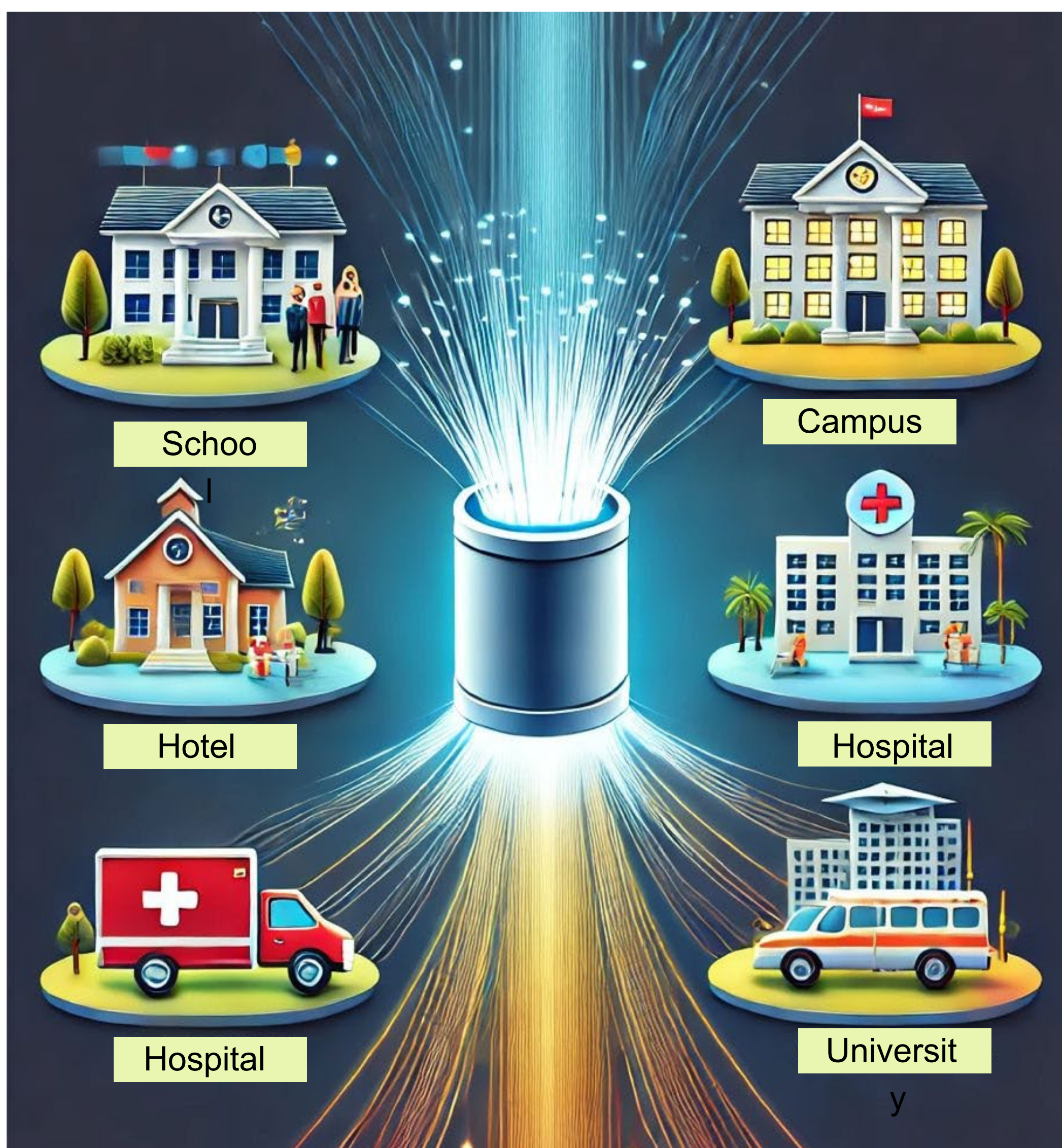
- Topology Mapping
- Passive Element Monitoring
- Auto-Ticketing for Infrastructure issues
- Planning Support



Empowering India's ISPs: Fii's Intelligent Platform Drives Connectivity for Leaders like

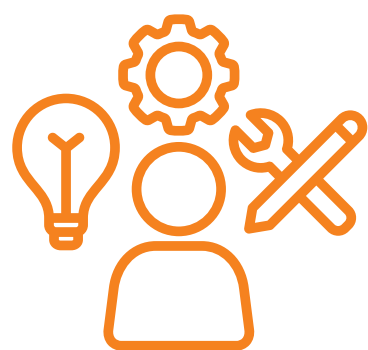


F2TH Communications Pvt Ltd: Revolutionizing Connectivity



F2TH Communications Pvt Ltd delivers high-performance optical networking solutions to enterprises across industries. With a portfolio of 500+ customers, including Internet service providers, hospitals, hotels, schools, colleges, universities, and smart campuses, we empower businesses to enhance user experiences, gain a competitive edge, and drive digital transformation with future-ready, simple, and reliable connectivity.

F2TH : Your Trusted Partner in Connectivity



Expertise, Specialized Knowledge & Experience



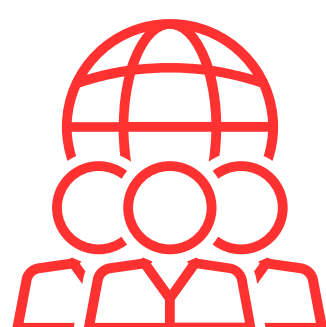
Comprehensive and Cost effective Solution



Customer -centric approach



High Quality



World Class After Sales Support



Understanding the Customers and nurturing relationships

CONTACT US



F2TH Communications Pvt. Ltd.,
165, 1st Floor, 9th Cross,
Indiranagar 1st Stage,
Bangalore - 560038.



www.f2th.in



sales@f2th.in



Enterprise sales 81052 72805

Karnataka 88671 02752

Kerala 90350 53963

Maharashtra & Gujarat 89510 49436

Telangana & AP 89517 89288

Tamil Nadu 81970 23395

FOLLOW US

